

LIGHTFIELD, INC.

STUDIO

Lightfield, Inc. is an award winning lighting design studio established in 1987. Our practice concerns the exploration of light as an art and design medium. Fascinated by the infinite ways in which light affects our perception of color and texture, sound and space, movement and time, we strive to expand our experience of this phenomena.

Creative collaboration is at the core of our work: our innovation grows from an ongoing dialog with architects, designers and artists who understand light as a most vital medium.

We strive to develop design solutions which incorporate lighting as an inherent element of the built environment. Sustainability is integral to our design. Our efficient installations retain their original look for many years.

PROCESS

Founded by an architect specializing in lighting design, Lightfield, Inc. recognizes the importance of professional compatibility between the architect and lighting consultant. Our architectural background facilitates effective communication with our clients and our operation is designed for the smooth exchange of project documentation.

In order to maintain the integrity of the design process, Lightfield follows a project from its conceptualization to its implementation. We see it as a four-phase process:

CONCEPTUAL DESIGN PHASE

Our early involvement in the project helps the architect and client to establish lighting design goals and clarify program requirements. It ensures that the lighting will be well integrated into the emerging architecture. Besides the development of the lighting concept, our services at this phase may include preparation of presentation materials, mock-up studies, illumination calculations, energy use analysis, and budget estimates.

CONSTRUCTION DOCUMENTS PHASE

To ensure successful implementation of the lighting design concepts, Lightfield will provide complete lighting plans as well as detailed fixture drawings and specifications suitable for inclusion in bidding documents.

BID AND NEGOTIATION PHASE

We will evaluate proposed substitutions for compliance with our design intent and specification requirements. We will make our own value engineering suggestions, at no cost to owner, if the lowest qualified bidder exceeds our budget estimates.

CONSTRUCTION ADMINISTRATION PHASE

Our involvement in the project during this phase includes: approval of the contractor's submissions, review of the manufacturer's shop drawings to ensure compliance with the original design, site visits to inspect and coordinate the installation, supervision of the fixtures' focusing, and the preparation of punch lists.

AWARDS

2010 IIDA Global Design Excellence Award. Bancolombia, Medellin, Colombia
Architect: IA Interior Architects

2010 IIDA New York Chapter, Lester Dundee Award. Bancolombia, Medellin, Colombia
Architect: IA Interior Architects

2009 CoreNet North California Chapter. Innovation Award. Bancolombia, Medellin, Colombia. Architect: IA Interior Architects

2009 Interior Design Magazine. Best of Year Award. Bancolombia, Medellin, Colombia
Architect: IA Interior Architects

2009 Interior Design Magazine. Best of Year Award of Merit. 2 North Moore Residence
New York, NY. USA. Architect: TCA

2008 Lumen Award of Merit. Miyake Madison. New York, NY. Architect: G Tects, LLC

2008 IFMA of Greater New York Award for Excellence. IA Offices, New York
Architect: IA Interior Architects

PRESS

2012

Interior Design, USA. The Best in Office Design. Edited by Cindy Allen

2012

IIDA, US., What Clients Want. Edited by Melissa Feldman

2012.11

Interior Design, USA. Postcard from the Alps. City Living

2012.09

Architectural Record, USA. 73rd Street Penthouse, NYC

2011.11

Interior Design, USA. Southern Hospitality. Atlanta welcomes JWT

2011.11-12

New York Spaces, USA. Open House

2010.05

Contract, USA. Luxe + Lean. Bancolombia Headquarters. Medellin, Colombia

2009.12

Interior Design, USA. Best of Year Award. Bancolombia, Medellin.
IA Interior Architects

2009.12

Interior Design, USA. Best of Year Award of Merit. Townhouse, New York
Turett Collaborative Architects

2009.05

Hinge, Hong Kong. Office of IA Interior Architects, New York City

2009.01

Illuminate, USA. Miyake

2008.05.19

New York Magazine, USA. Hyper Design. Crazy-obsessive New York Homes

PRESS (cont'd)

2008.05

Retail Design International, Issey Miyake Madison Avenue, New York

2008.01

Vogue, UK. Can I buy some sleep?

2008.01

Urbis, Design / Living / Style, New Zealand. Check Mate.

2007.12

Spa-De. Space and Design. International Review of Interior Design, Japan. Miyake Madison New York

2007.10

Display & Design Ideas, USA. Black, white and glowing

2007.09

Frame, The Netherlands. Mellow Yelo. The Apartment

2007.07

Frame, The Netherlands. Le Blanc et le Noir. Gordon Kipping Shop

2007 Fall

Surface. Fashion / Architecture / Design, USA. Miyake Madison New York

2007.06

Interior Design, USA. Issey Miyake, Madison Avenue

2007.06

Azure, Canada. Etcetera. Miyake Madison

2007.05

Casa Brutus. Japan. Issey's Bold Uptown Move

2007.05

Metalocus, Spain. Miyake Madison New York

2007.04.09

New York Magazine, USA. The nap revolutionary

2007.03

Architectural Record, USA. Miyake Madison on New York's Upper East Side

2006.12.11

The Architect's Newspaper. Issey Miyake

2006.10.26

WWD, Thursday. USA. Miyake Goes Black and White for New NYC Shop

2005.06

VM+SD, USA. Simply Beautiful. Eileen Fisher at Time Warner Center

2005 Winter

Oculus, USA. 59E59 Theatres

2005.01

Architectural Record, USA. 59E59 Theatres. Performing Arts.
Building types studies

2004.10

Covjek I Proctor, Croatia. 59E59 Theatres

2004.01

Project Russia, Russia. A Conversation with Alexander Radunsky

PRESS (cont'd)

2004.02.19

The New York Times, USA. House Proud. Townhouse Invites the Outside In

2004

Plop: Recent Projects of the Public Art Fund. USA, Merrell. Canal Street Subway Project

2001.10

Interior Design, USA. She's Back. Diane von Furstenberg celebrates her re-emergence on the fashion scene

2001.10

Lighting Dimensions on Architecture, USA. Who's the Boss? Hugo Boss unveils a slick new Manhattan flagship

2001.07

VM+SD, USA. It's Fun To Be Boss. "Flagship to the World" won't be boring

2001.03

VM+SD, USA. Rocking the Center. Kenneth Cole brings downtown energy to a midtown landmark

2001.04

Architecture Week, USA. Basketball Business

2001.02

Interiors, USA. Booze-Arts Design. Renovation of the Villard Bar and Lounge

1994.08

Architectural Digest, USA. A Queen Anne Revival

1993.08

Store Planning & Design Review, USA. Macy's, Mall of America. Bloomington, MN

1992.12

Hospitality Design, USA. Putting on the Glitz. Renovation of the Hotel Edison



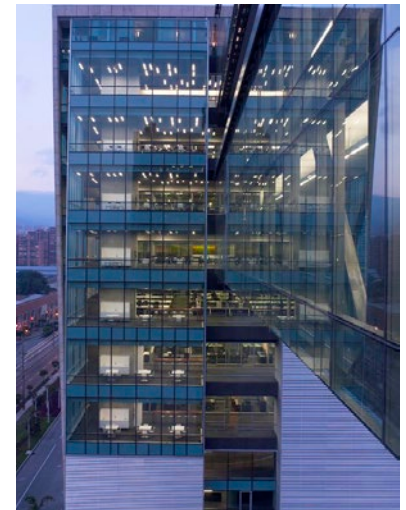
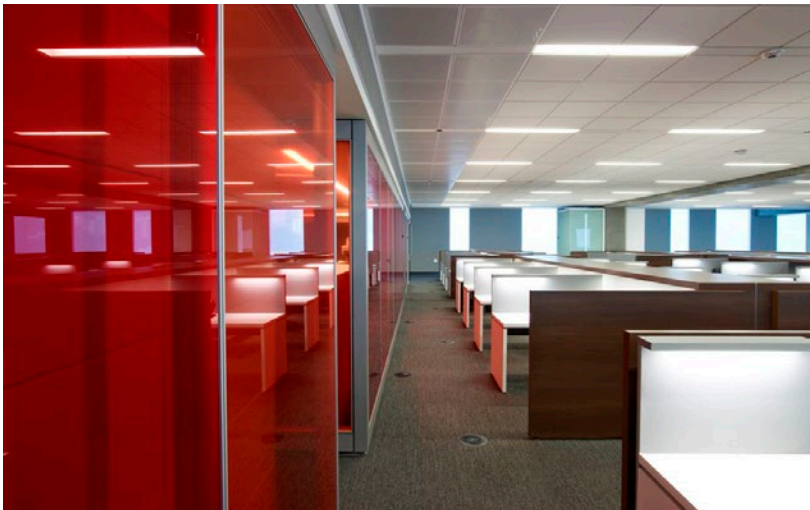
2009

IA NEW YORK OFFICES

The design for Interior Architects' new offices can be interpreted as a number of separate structures or interior elements assembled within one building's level, turning it into an "interior landscape."

Following the architect's approach, the lighting scheme consists of a number of lighting applications, each used in response to a particular architectural form: The free-standing accent wall of the entry with its vertical lights is facing the glowing "glass house" of the library, which is adjacent to the smaller "houses" of supporting facilities with their up-lit ceiling planes. The "outdoor" open space of the design studio is illuminated by the canopy-resembling rows of bare T6 fluorescent channels, suspended over the studios' common areas. The building's shell structure, being left exposed, spans over the "interior architecture."

Location:
New York, NY
Architect:
Interior Architects
Photographer:
Adrian Wilson



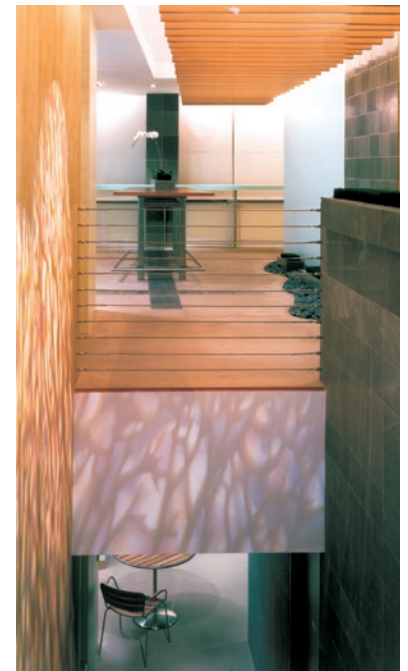
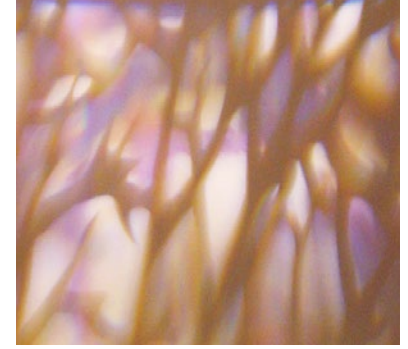
2009

BANCOLOMBIA HEADQUARTERS

Bancolombia's 1,000,000 sq.ft. headquarters include a conference center, a presidential suite, several stories of open-plan offices, as well as a fitness center, a restaurant and an employees' dining facility. The building's "lighting vocabulary" was developed in response to the structure's vast scale to simplify orientation within the headquarters' various facilities.

Location:
Medellin, Colombia
Architect:
Interior Architects
Photographer:
Eric Laignel

Illumination of the exposed segments of the building's shell emphasizes its scale and reveals the rhythm of its major structural elements. It articulates the distinction between the building's concrete infrastructure, and the "inner architecture" of the headquarters' numerous departments.



2002

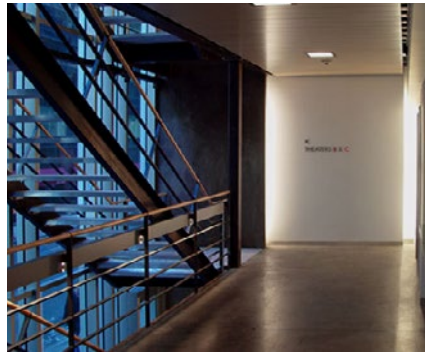
FIRMENICH INTERNATIONAL FINE FRAGRANCE CENTER

Firmenich is one of the oldest and largest fragrance and flavor companies in the world. The company's year-round program of events for select groups of industry insiders is an important function of its NYC headquarters. Lighting for the areas opened for visitors requires the flexibility to transform the usual sense of calm into the dramatic lighting scenarios of specific events.

The headquarters are anchored by two atriums. In the first one, a row of suspended beams house fluorescent up-lights. Their light, reflecting off the concrete slab above, creates the impression of an exterior pergola structure. The same beams baffle theatrical light fixtures which allow a slowly-moving pattern of light and shadow to fill the atrium, suggesting sunlight filtering through the branches of a tree.

The second atrium's two-story high structure of suspended glass shelves screens the view from the open space into the conference rooms of both levels. The entire glass structure is subtly lit by an arrangement of deeply recessed fluorescent lights concealed along its vertical edge.

Location:
New York, NY
Architect:
Swanke Hayden Connell Architects
Photographers:
Elizabeth Felicella, Lev Radunsky



2004

59E59 PERFORMING ARTS CENTER

Comprised of triple-laminated wire-glass and randomly spaced, fin-like vertical mullions, the building's façade resembles a giant stage curtain. The wire-glass facade which shimmers as it reflects the sun becomes transparent at night, when the "front of the house" space with its five flights of stairs becomes a symbolic proscenium arch. The people inside the theater's foyer are perceived as "performers" when viewed from outside by passers-by.

This effect is created by four-story high linear lights hidden in the vertical "folds" constructed between the walls of the foyers. The concealed lights illuminate the background, allowing the figures on the stairway to be seen in silhouette.

Location:
New York, NY
Architect:
uRED Architecture
Engineer:
Guy Nordenson and Associates
Photographers:
Jenia Gabriele, Lev Radunsky



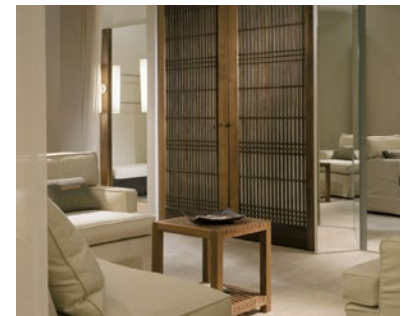
2007

MIYAKE MADISON AVENUE

The storefront glass panel of Miyake's Madison showroom spans the entire 26-foot wide exterior wall, visually opening the store's interior to the street. The syncopated rhythm of alternating fluorescent light-boxes and black voids of exposed ceiling sets up an "op-art" plane – provoking the attention of passers-by.

Deeper into the store, the horizontal and highly graphic lighting pattern is replaced with the glow of vertically-mounted fluorescent lights. The draped, white gauze curtain of the fitting area is softly back-lit by the bare fluorescent tubes mounted at the front edges of the freestanding mirrored partitions. Similar fluorescent tubes are placed on the opposite edge of each partition, along the perimeter wall. The placement of the fixtures accentuates the freestanding character of the partitions, while their dimensions and finish match that of the partitions, contributing to the minimalist character of the design scheme.

Location:
New York, NY
Architect:
G Tects
Photographer:
Mikiko Kikuyama



2004

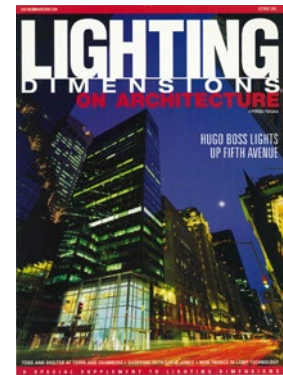
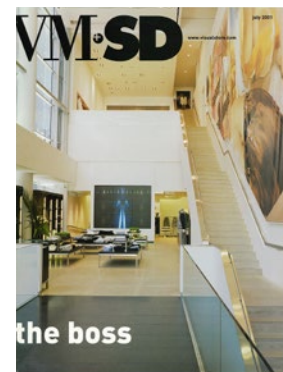
EILEEN FISHER TIME WARNER CENTER

The minimalist aesthetic of Eileen Fisher's fashion line is echoed by the interior of her flagship store. Our task was to support this atmosphere with a tranquil and non-glary ambience while providing the variety of light levels required for today's retail environment.

In order to achieve this objective, some of the light sources are hidden from view. For instance, a central structure, an abstract representation of a garden pergola, is used for this purpose. Its irregularly spaced beams discretely bear fluorescent up-lights – the main source of the store's ambient lighting. Additionally, the free-standing merchandise displays, located at the store's center, are accentuated by low-voltage spotlights that are also integrated into the pergola's structure. The graphics on the perimeter walls are highlighted by recessed lights concealed just above the perimeter's fluorescent cove.

Location:
New York, NY
Architect:
The Phillips Group
Photographer:
Mike Butler

Retail



2001

HUGO BOSS FIFTH AVENUE

The 45-foot high glass atrium is the store's main entrance and primary retail area, as well as a space for special events and after-hours parties.

In association with
JKLD, Inc. New York, US
Location:
New York, NY
Architect:
The Phillips Group
Photographers:
Zbig Jedrus, Richard Cadan

To accommodate Hugo Boss' very complex lighting requirements, we developed a system of large troughs that contain within them all necessary lighting equipment. The proportions and placement of the troughs compliment the scale of the atrium. Metal halide floodlights are doubled with a halogen lighting system which is used for special events where dimmed lighting is required. Both systems are equipped with color-mixing scrollers. Additionally, light fixtures with 3° light spreads are used to accentuate various display elements.

Retail

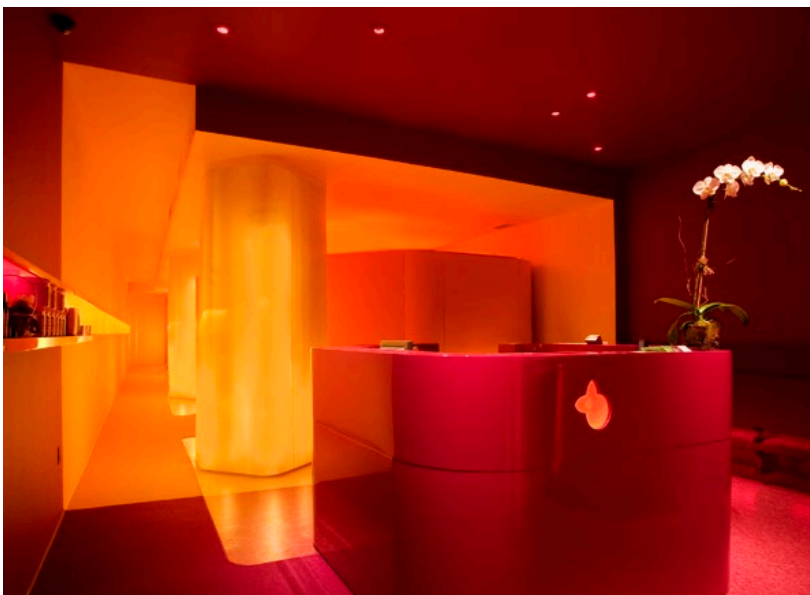


2001

A 30-foot high scrim curtain visually connects the store's two levels, while a row of spotlights placed between the layers of the scrim transforms it into a giant lighting element. This back-lit curtain also serves as a projection screen. Its dual function requires the scrim's illumination to be precisely balanced with the light level of the projected images.

KENNETH COLE ROCKEFELLER CENTER

In association with
Isometrix, London, UK
Location:
New York, NY
Designer:
Studio GAIA
Architect:
The Phillips Group
Photographer:
Mark Ballogg



2007

YELO NYC

Located in a busy Midtown section of Manhattan, Yelo explores an entirely new concept in wellness services. Combining reflexology with the benefits of a short nap, it helps urbanites deal with the pressures of modern life.

The appealing warm glow of the interior space intrigues the passers-by, and invites them in with a promise of comfort and relaxation. The lighting concept is based on the power of color and light as a strong sensory stimulant.

The monochromatic ruby hue of the entry room gains vibrancy thanks to the reddish tint of the accent lights. Further on, a yellow colored light emitted by the backlit enclosures of the column adds depth to the yellow-orange ambience of the hallway. This effect is continued by additional light sources of the same color that are concealed throughout the space.

The engaging glow of the general space leads to the intense color ambience of the treatment cabins, so-called YeloCabs, programmed per each customer's request.

Location:
New York, NY
Designer:
The Apartment
Photographer:
Jonathan Hokklo

Residential



2007

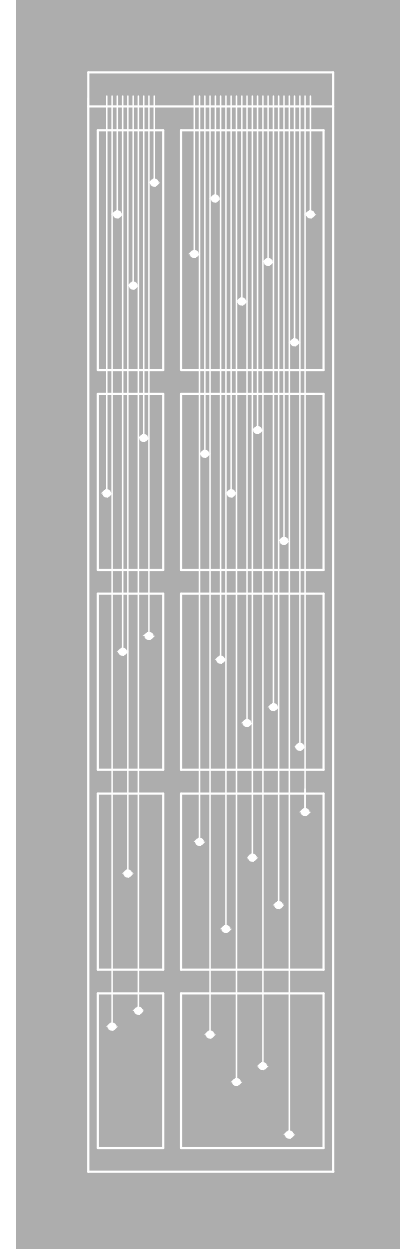
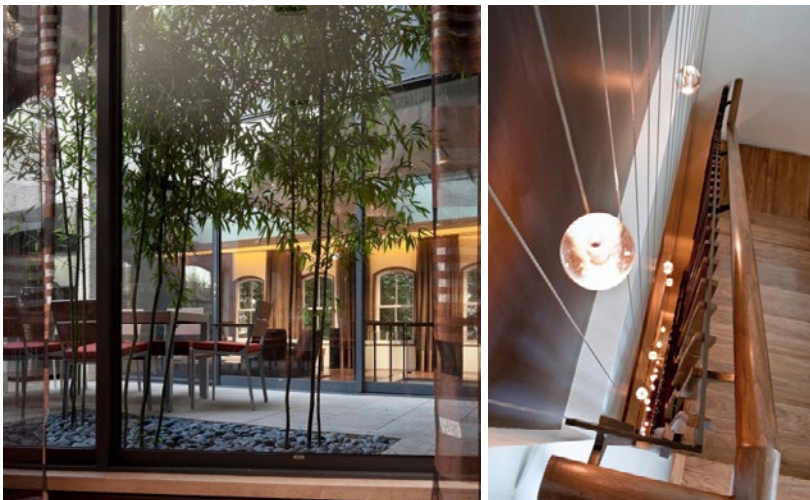
OLYMPIC TOWER RESIDENCE

High-gloss walls, lacquered columns and polished white quartz floors enhance the perception of spaciousness, while an uninterrupted wall of floor-to-ceiling windows opens the residence to an overwhelming view of the city.

The challenge, presented by the high reflectivity of virtually all of the surrounding architectural materials, is met by the lighting solution. A unifying continuous cove-light is strategically placed at the top of the smaller rooms along the inner side of the apartment. It alters the spatial perception of the relatively low, 9ft. high ceiling. The image of the cove-light is carried further by its reflections in the glass walls of the master bedroom and the study, which flank the cove-light on both ends.

The bathrooms, with 8 ft. high ceilings, feel less confined thanks to their custom-made recessed vertical lights.

Location:
New York, NY
Architect:
Turett Collaborative Architects
Photographers:
Robert Naccarato, Alexander Radunsky



2009

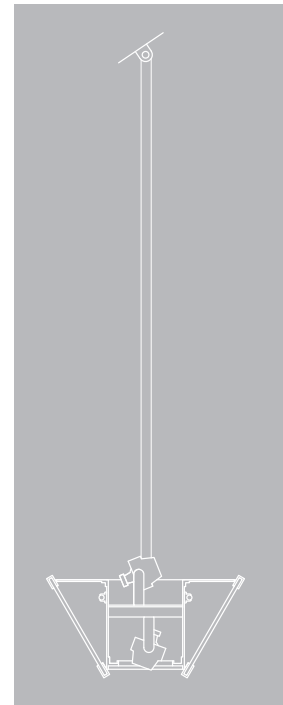
WEST BROADWAY TOWNHOUSE

A series of floor-concealed linear lights on the ground floor emphasize particular elements of the interior. When first seen through the etched-glass partitions of the vestibule, the lights appear at the “wainscot” height, revealing the elevated level of the ground floor platform.

Thirty-three decorative globe lights are individually suspended within the shallow space which separates the building’s main stairway from the adjacent seven-story-high wall. The globes temporarily increase their light intensity in response to motion on the stairway.

A dining room, living room and a pool room on the second floor surround a landscaped courtyard. The 60ft. long straight line of the cove-light faces the exterior wall, helping to visually connect the dining area with the living room.

Location:
New York, NY
Architect:
Turett Collaborative Architects
Photographer:
Paul Warchol

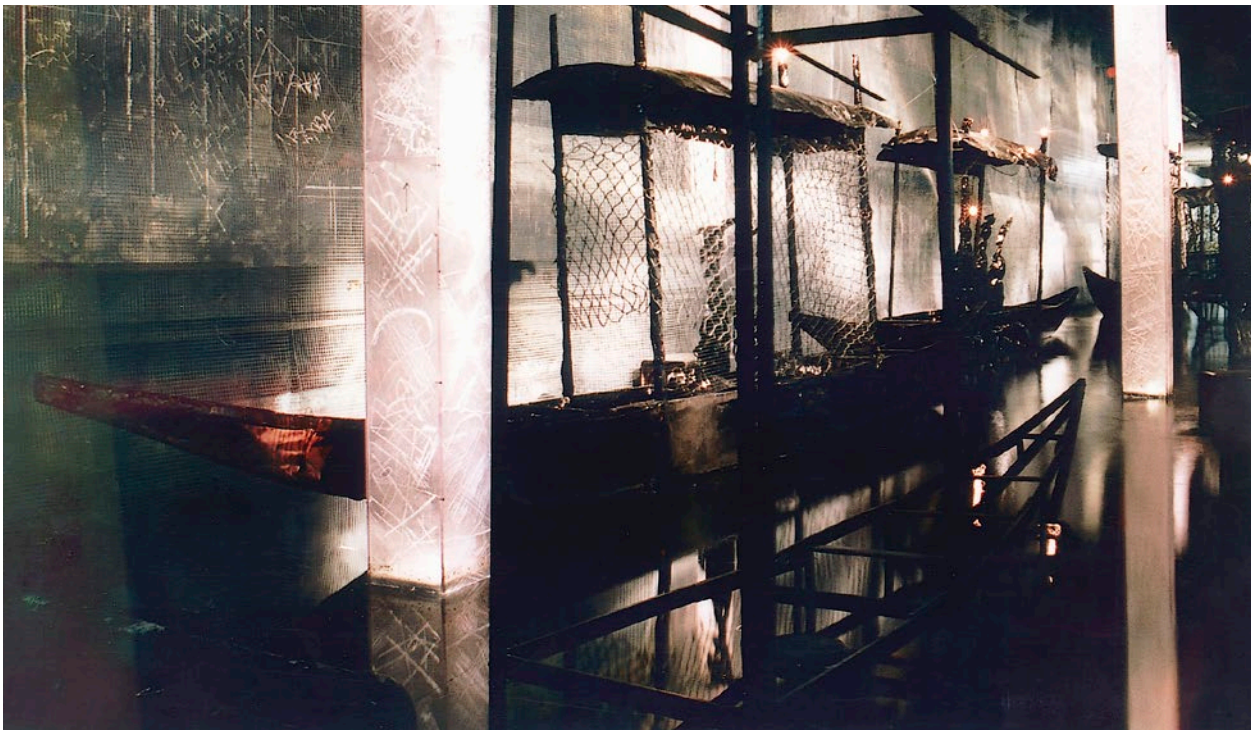


2004

The ten custom-made fixtures of the Screening Room are reminiscent of the decorative chandeliers of the nineteen-twenties. Behind the fixture's backlit sandblasted panels is a concealed row of long-life MR16 directional lights in three, separately controlled groups. These lights illuminate the ceiling, wash-light the built-in bookshelves and accentuate the artwork and fireplace.

**STUDIO AT CLOUDWALK
DIANE VON FURSTENBERG AND
BARRY DILLER RESIDENCE**

Location:
New Milford, CT
Designer:
Bill Katz Studios
Photographer:
Jenia Gabrielelev



1998 CANAL STREET SUBWAY PROJECT

An 80-foot long water-pool was built on the tracks of an unused portion of a subway station at Canal Street. The conventional subway space was transformed into a surreal underground canal. The lighting effect is achieved by using the transparent and reflective properties of a mesh screen, which envelops the entire installation.

The scene is illuminated by a system of accent lights of various light-spread and intensity, all concealed behind the steel beams of the existing subway infrastructure. Other lighting elements include internally illuminated columns emerging from the water, and floating gondolas with dimmed, candle-like lights.

Location:
New York, NY
Artist:
Alexander Brodsky
Photographer:
Richard Pare

LIST OF PROJECTS

Art Installations

Canal Street Subway Project
Location: New York, NY
Artist: Alexander Brodsky

'Visible Parts'
Ronald Feldman Fine Art Gallery
Location: New York, NY
Artist: Alexander Brodsky

Banks

Merrill Lynch
Location: Grosse Point, MI
Architect: IA Interior Architects

HSBC Premier Branch
Location: Minneola, NY
Architect: IA Interior Architects

Federal Credit Union
Location: Bethpage, NY
Architect: The Phillips Group.
Project not realized

Corporate Facilities

JWT Headquarters.
Location: Atlanta, GA
Architect: Interior Architects

IA New York Offices
Location: New York, NY
Architect: Interior Architects

Bancolumbia Headquarters
Location: Medellin, Colombia
Architect: Interior Architects

Firmenich
International Fine Fragrance Center
Location: New York, NY
Architect: Swanke Hayden Connell Architects

Pearson US Headquarters
Location: New York, NY
Architect: Group 3, Inc.

Synelec USA
Location: Englewood, NJ
Architect: AAK Design, Inc.

Corporate Facilities (cont'd)

Nokia Siemens Networks
Location: Helsinki, Finland
Architect: Interior Architects

Femsa Cerveza Headquarters
Location: Monterrey, Mexico
Architect: The Phillips Group

Offit Hall Headquarters
Location: New York, NY
Architect: Interior Architects

Richemont North America
Location: New York, NY
Architect: Interior Architects

The Dinex Group
Location: New York, NY
Architect: Interior Architects

Federal Credit Union
Location: Bethpage, NY
Architect: The Phillips Group

Creative Artists Agency
Location: New York, NY
Architect: The Phillips Group

And-1
Location: Rosemont, PA
Architect: The Hillier Group

9 UPN WWORTV
Location: New York, NY
Architect: SPG + Partners

Stinnes Corporation
Location: New York, NY
Architect: SPG + Partners

N.W. Ayer and Partners
Location: New York, NY
Architect: SPG + Partners

Bowne of New York
Location: New York, NY
Architect: CSO Associates

Harper & Row
Location: New York, NY
Architect: MGS Architects

Kodansha International
Location: New York, NY
Architect: MGS Architects

General Resources International
Location: New York, NY
Designer: ARDI.

Cultural Institutions

59E59
Performing Arts Center
Location: New York, NY
Architect: uRED Architecture
Engineer: Guy Nordenson and Associates

French American Cultural Exchange
Location: New York, NY
Project not realized

Art Alcove
Bank of America Headquarters
Location: Charlotte, NC
Architect: Little Diversified Architectural Consulting

Assembly Hall
Israeli Embassy in Beijing
Location: Beijing, China
Architect: Pelleg Architects, Israel

Educational Facilities

Faculty Housing
Bilkent University
Location: Bilkent, Turkey
Architect: Hiller Architecture

Kraft Building
Columbia University
Location: New York, NY
Architect: Gruzen Samton

Lander Building
Touro College
Location: Kew Gardens Campus, NY
Architect: Gruzen Samton

Paul Klapper Hall
Queens College
Location: Queens, NY
Architect: Beyer Blinder Belle
In association with JKLD, Inc.

LIST OF PROJECTS (cont'd)

Exhibitions

Aircraft Historical Museum
Permanent Exhibition
Location: Polk City, Florida
Designer: Mc Bright and Associates

'To be looked at from the
other side'
Pratt Institute
Location: New York, NY
Designer: ARDI

'Assignment: Rescue'
United States Holocaust
Memorial Museum
Location: Washington, DC
Designer: Lynn Breslin

Hospitality Projects

Yelo NYC
Location: New York, NY
Designer: The Apartment

Blue Hill Plaza Cafeteria
Location: Pearl River, NJ
Designer: AAK Design

Zest Restaurant
Intercontinental Hotel
Location: Chicago, IL
Designer: Studio GAIA

Villard Bar and Lounge
New York Palace Hotel
Location: New York, NY
Designer: Pierre Court
Design Studio

Theo Bar and Restaurant
Location: New York, NY
Designer: Jonathan Morr Group

Greyson Restaurant
Location: Germantown, MD
Designer: R. Jones & Associates

Lakeover Country Club
Location: Bedford, NY
Architect: SPG + Partners
Project not realized

Lobbies

40 West 57 Street
Location: New York, NY
Architect: Kohn Pedersen Fox
Associates, PC

Anti-Defamation League
Location: New York, NY
Architect: CSO Associates
Project not realized

Museums

Museum for African Art
Location: New York, NY
Architects: Robert A. M. Stern
Architects. G Tects
Designer: SRA Consultancy
In progress

Femsa Cerveza Historical Museum
Location: Monterrey, Mexico
Architect: The Phillips Group

Spiritual

Temple Israel Center
Location: White Plains, NY
Architect: Gruzen Samton

Renovation Projects

Private Residence in Westchester
Location: Larchmont, NY
Architect: Studio for Architecture

Hotel Edison
Location: New York, NY
Designer: R. Jones & Associates

The Tremont House Hotel
Location: Boston, MA
Designer: R. Jones & Associates

Residential Projects

101 West 67 Street Penthouse
Location: New York, NY
Architect: Turett Collaborative
Architects
In progress

15 Leonard Street Tower
Location: New York, NY
Architect: Turett Collaborative
Architects
In progress

West Broadway Townhouse
Location: New York, NY
Architect: Turett Collaborative
Architects

Olympic Tower Residence
Location: New York, NY
Architect: Turett Collaborative
Architects

Union Square West Tower.
Facade Lighting
Location: New York, NY
Architect: Perkins Eastman
Architects
Project not realized

Studio at Cloudwalk.
Diane von Furstenberg and
Barry Diller Residence
Location: New Milford, CT
Designer: Bill Katz Studios

East 73 Street Penthouse
Location: New York, NY
Architect: Turett Collaborative
Architects

Charles Street Townhouse
Location: New York, NY
Architect: Turett Collaborative
Architects

Metropolitan Tower Residence
Location: New York, NY
Designer: The Apartment

Waverly Place Townhouse
Location: New York, NY
Architect: Turett Collaborative
Architects

LIST OF PROJECTS (cont'd)

Residential Projects (cont'd)

Hudson Street Residence
Location: New York, NY
Architect: Cleveland Harp
Architecture & Design

Leroy Street Townhouse
Location: New York, NY
Architect: Turett Collaborative
Architects

Broadway Residence
Location: New York, NY
Architect: Turett Collaborative
Architects

West 129 Street Condominiums
Location: New York, NY
Architect: Lilia Sodre

Queens West Waterfront Tower
Location: Queens, NY
Architect: Perkins Eastman
Architects

Vacation House
Location: Denver, CO
Architect: Cooper, Robertson
& Partners

Upstate Residence
Location: Garrison, NY
Architect: Frank Edward Dushin
Architect

Retail Stores

Diane von Furstenberg SoHo
Location: New York, NY
Designer: DvF

Diane von Furstenberg Ginza
Location: Tokyo, Japan
Designer: DvF

Moscow Shopping Center
Location: Moscow, Russia
Architect: Interior Architects
Conceptual Studies

Miyake Madison Avenue
Location: New York, NY
Architect: G Tects

Retail Stores (cont'd)

Eileen Fisher
Time Warner Center
Location: New York, NY
Architect: The Phillips Group

Hugo Boss Fifth Avenue
Location: New York, NY
Architect: The Phillips Group
In association with JKLD, Inc.

Kenneth Cole Rockefeller Center
Location: New York, NY
Designer: Studio GAIA
Architect: The Phillips Group
In association with Isometrix,
London, UK

Mexx Fifth Avenue
Location: New York, NY
Architect: The Phillips Group

Diane von Furstenberg Showroom
Location: New York, NY
Designer: Bill Katz Studios
Architect: BE Partners

Helmut Lang Parfumerie SoHo
Location: New York, NY
Architect: Gluckman Mayner
Architects
In association with Isometrix,
London, UK

Nautica Rockefeller Center
Location: New York, NY
Architects: TsAO McKNOWN.
The Phillips Group
In association with Isometrix,
London, UK

Liz Claiborne Fifth Avenue
Location: New York, NY
Designer: MOVK
Architect: Levi Sanchik and
Associates

Candies Prototype Design
Architect: Bergmeyer Associates

Sam Goody / Suncoast
Prototype Study
Client: Best Buy Co. Inc.
Design Group

Lenox Prototype Design
Architect: Pendergast & Terach

Retail Stores (cont'd)

Sigrid Olsen Prototype Design
Architect: The Phillips Group

Laundry Prototype Design
Architect: The Phillips Group

Chef Central
Location: Hartsdale, NY
Architect: Turett Collaborative
Architects

Macy's Mall of America
Location: Bloomington, MN
Architect: Slomanson Smith
& Barresi Architects

Exterior and Site Illumination

Urban Plaza at 839 Sixth Avenue
Location: New York, NY
Architect: Perkins Eastman
Architects

Pedestrian Passage at
40 West 57 Street
Location: New York, NY
Architect: Kohn Pedersen Fox
Associates

Delano Village
Location: New York, NY
Architect: G Tects
Project not realized

40 Wall Street Tower
Location: New York, NY
In association with Douglas
Leigh Organization

Dayton's
Location: Southdale Edina, MN
Architect: Slomanson Smith
& Barresi Architects